
specifications
subject
to change

© 2025
rev. 11/29/2025

job name:

type:

12"/18"/24" sq.3™ ceiling spec sheet 90CRI

housing
3.5" smooth square extruded architectural 6063 aluminum outer housing in five lengths available in 15 standard powder coat paint finishes listed below. premium RAL and wood finishes also available.

LED
COB in 2700K, 3000K, 3500K, or 4000K (90 cri standard) rated >36,000 hours L70 (6.8K) per LM-80 test data, and 71,000 hours projected life per IES TM-21.

downlight optics
LEDiL® Angelina 82mm dia 31mm high (RoHS compliant) available in 20° spot, 30° medium, 50° wide with specular anodized finish. 90° extra wide features matte white highly reflective finish. color mixing sublens standard. standard mounting clamp allows for easy replacement of reflector in field. the typical total beam angle is the full angle measured where the luminous intensity is half of the peak volume.

driver
constant current, class P, class 2 power unit, class A sound rating, universal input (120-277V) programmable driver, 5% minimum dimming level, PF >0.90. protections include short circuit, input/output isolation and surge protection (3KV). wired for 0-10v dimming from factory. 6" canopy painted to match fixture. satin black canopy standard on wood finishes.

mounting standard
driver in junction box (requires 2 1/8" deep electrical box). for other sizes, driver in top of fixture. see note for H3 lumen package on 6" ht. special universal mounting bracket allows EC to clock fixture orientation during installation. 6" sq. canopy painted to match fixture. satin black canopy standard on wood finishes.

remote enclosure (.LV) (optional)
the standard driver can be remote mounted up to 33ft from the LED. suspension length should be considered in distance. remote enclosure supplied. for distances greater than 33ft consult factory. for Chicago Plenum installation consult factory.

finish
select from 15 standard powder coat paint finishes or 3 wood finishes (listed below) or specify RAL# for custom colors.

emergency
if required, recommend use of inverter (by other).

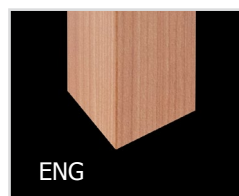
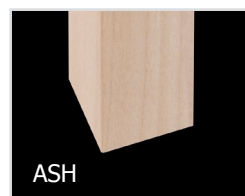
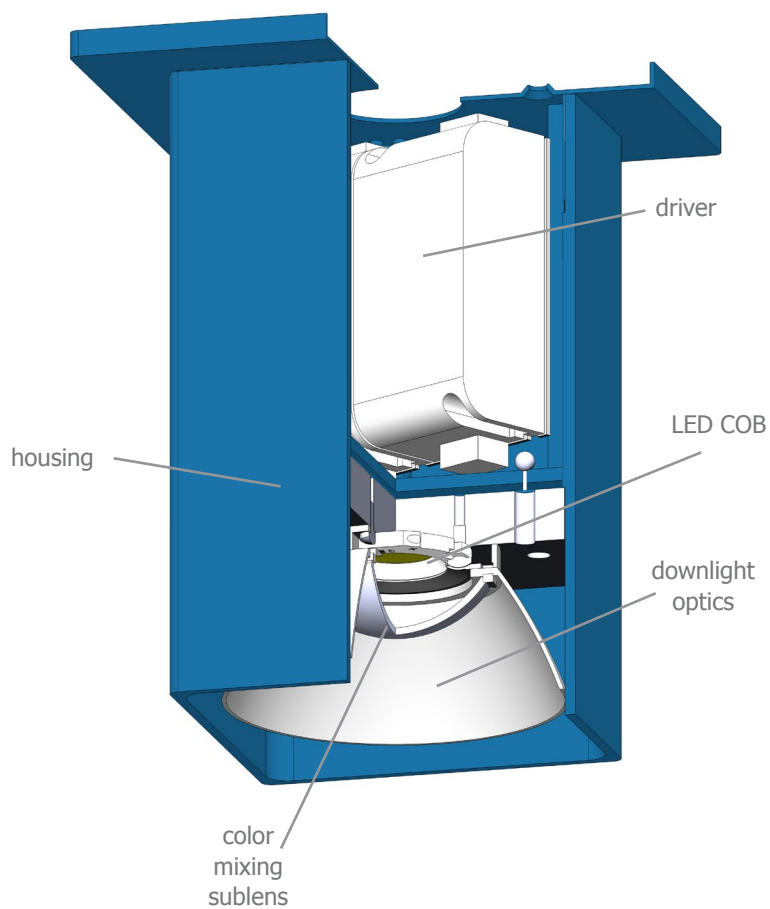
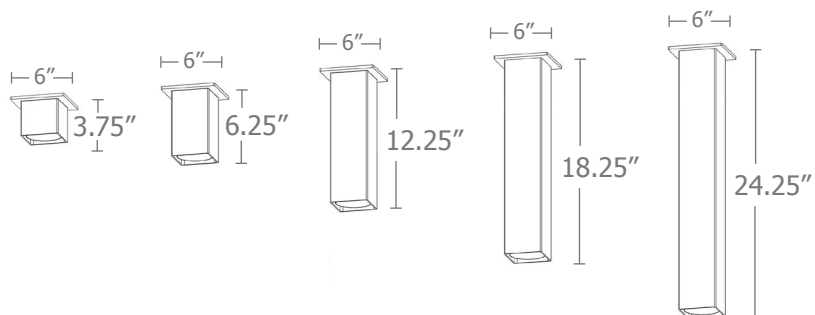


catalog number

| size | beam | CCT | lumens | painted finish |
|---|-------------------|----------|---|-----------------------|
| C6612 driver in fixture | S 20° spot | 27 2700K | L1 395 lm | AP anodized paint |
| C6612.LV remote enclosure 3.5"dia X 12.25"ht | M 30° med | 30 3000K | L2 695 lm | BS brass |
| | W 50° wide | 35 3500K | L3 995 lm | BU blue |
| C6618 driver in fixture | XW 90° extra wide | 40 4000K | H1 1390 lm | BZ bronze |
| C6618.LV remote enclosure 3.5"dia X 18.25"ht | | | H2 1985 lm | CP champagne |
| | | | H3* 2780 lm | FB flat black |
| C6624 driver in fixture | | | *H3 lumen package in C6606 requires min. 2-1/8" deep j-box. | GM gun metal |
| C6624.BABA driver in fixture | | | | MB military blue |
| C6624.LV remote enclosure 3.5"dia X 24.25"ht | | | | MW matte white |
| | | | | OR orange |
| | | | | RD red |
| | | | | SB satin black |
| | | | | SS satin silver |
| | | | | TG textured gray |
| | | | | YO yellow |
| | | | | premium finish |
| | | | | RAL specify RAL# |
| | | | | wood finish |
| | | | | ASH ashwood |
| | | | | ENG english brown oak |
| | | | | ESP espresso |



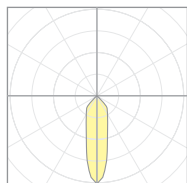
This product meets the guidelines for the Build America, Buy America Act.
Some Exclusions Apply. For more information and full list of eligible SKUs, please contact the factory at info@impactltg.com



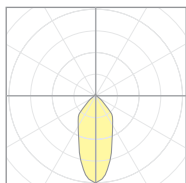
Calculation Table

The application of a Light Loss Factor is required to:

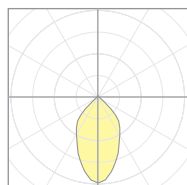
- match the lumen output for the power module specified
- incorporate the increased lumen output due to LED/Driver upgrades



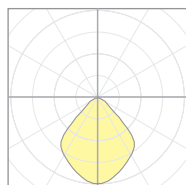
20921
P7506-S-40H3
S 20° spot



20922
P7506-M-40H3
M 30° med



20923
P7506-W-40H3
W 50° wide



20924
P7506-EW-40H3
XW 90° extra wide

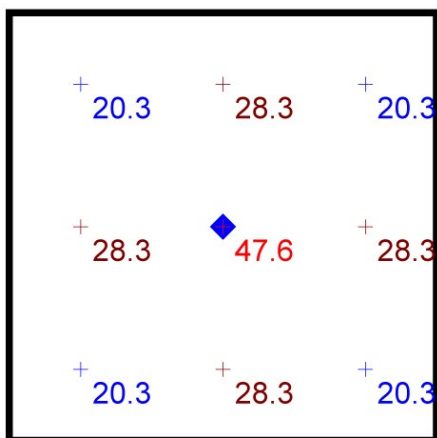
| Cat No | Delivered* Lumens | Watts 120V / 277V | IES File #** | LLF to be applied |
|------------|-------------------|-------------------|--------------|-------------------|
| L1 | 395 | 4 | W 20923 | .12 |
| L2 | 695 | 7 | W 20923 | .22 |
| L3 | 995 | 10 | W 20923 | .31 |
| H1 | 1390 | 14 | W 20923 | .44 |
| H2 | 1985 | 20 | W 20923 | .63 |
| H3 | 2780 | 28 | W 20923 | .88 |
| | S 20° spot | M 30° med | W 50° wide | XW 90° extra |
| ies file # | 20921 | 20922 | 20923 | 20924 |

*delivered lumens based on 4000K, 90+ cri **choose the file that matches your beam spread

Typical Lighting Layout

| Schedule | | | | | | |
|----------|----------|-------------------------------|----------------|--|-----------------|---------|
| Symbol | Quantity | Manufacturer | Catalog Number | Description | Lamp | Wattage |
| | 1 | Impact Architectural Lighting | C6612 W 40 H1 | 12" length sq.3 ceiling mount downlight cylinder | 4000k 90cri LED | 21 |

| Statistics | | | | | | |
|-------------|--------|---------|---------|---------|---------|---------|
| Description | Symbol | Avg | Max | Min | Max/Min | Avg/Min |
| sq.3 | + | 26.9 fc | 47.6 fc | 20.3 fc | 2.3:1 | 1.3:1 |



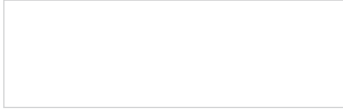
Plan View
Scale - 1" = 2ft

- 10' x 10' space
- 80/50/20 reflectances
- bottom of fixture at 10' aff
- FC readings at 2.5' aff
- layout conducted using H2 lumen output 1985 lumens unit w/ 50-deg. beam spread

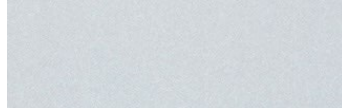
impactltg



Powder Coat Paint Finishes



MW matte white



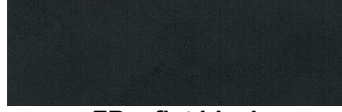
AP anodized paint



SS satin silver



TG textured gray



FB flat black



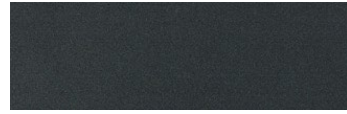
SB satin black



CP champagne



BZ bronze



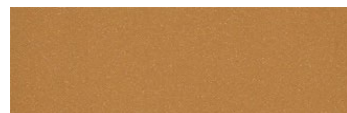
GM gun metal



OR orange 2011



BU blue 5017



BS brass



RD red 3020



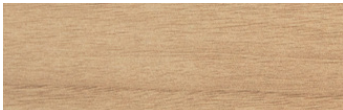
YO yellow 1018



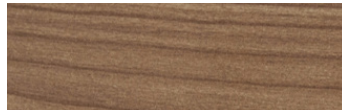
MB military blue

Premium Finishes*

Wood Finishes



ASH ashwood



ENG english brown oak



ESP espresso

For accurate color verification, actual finish samples are available upon request.



RAL#

*Available on select series. Consult product submittal for availability.

